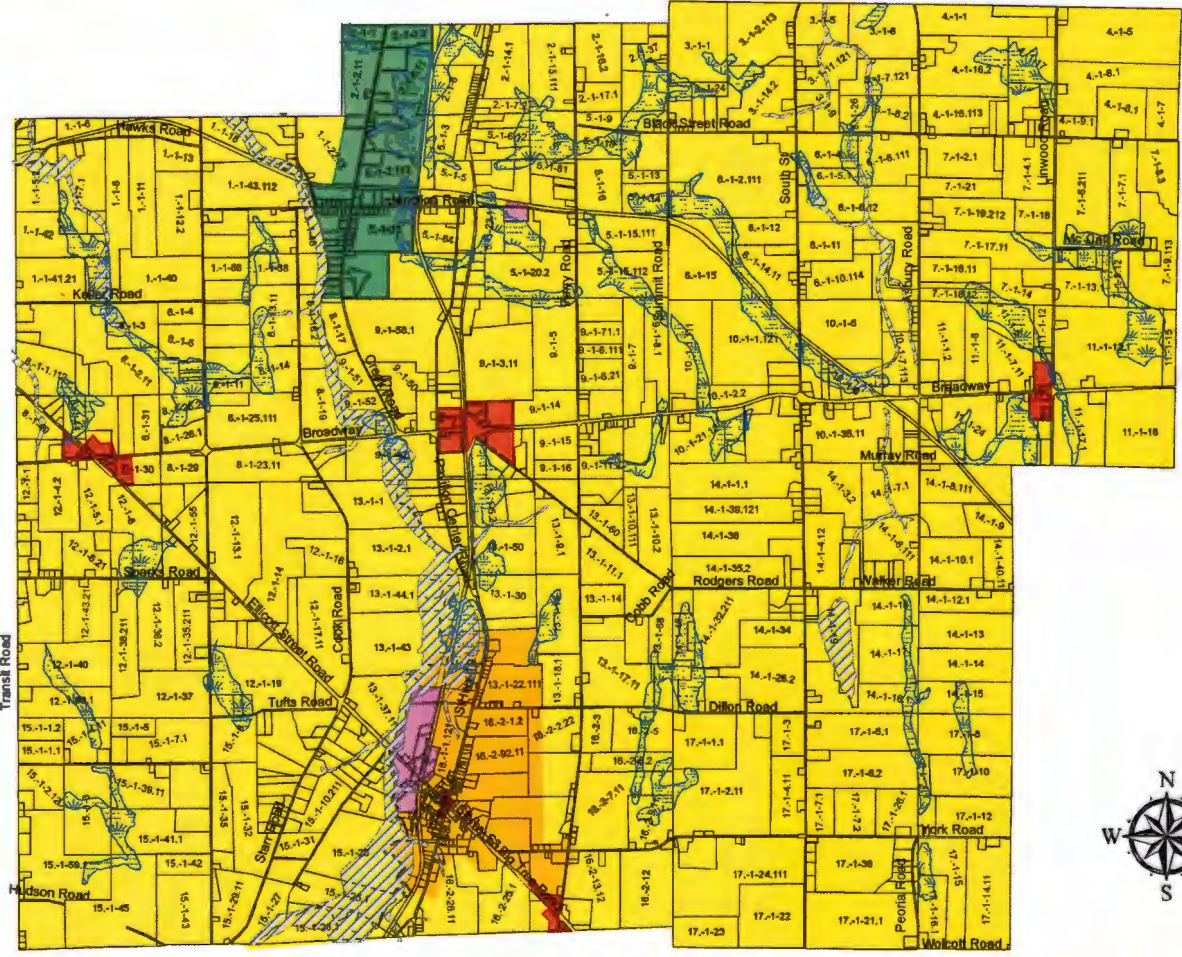


Town of Pavilion, New York Official Zoning Map



Key to Features

Zoning District

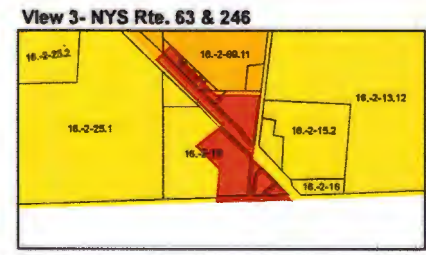
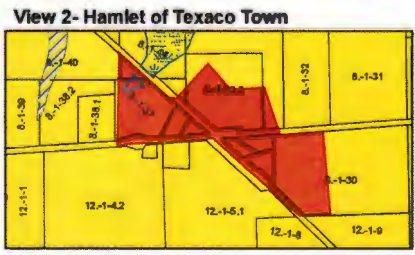
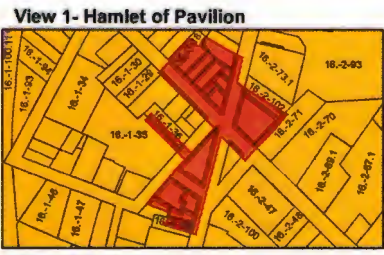
- Agricultural Residential - 1 (AR-1) see Sec. 501
- Agricultural Residential - 2 (AR-2) see Sec. 502
- Commercial (C) see Sec. 504
- Industrial (I) see Sec. 505
- Residential (R) see Sec. 503

State Regulated Wetlands

FEMA 100-year Floodplains



Revisions			
Enactment Date	Map Revision	Enactment Date	Map Revision
10-7-1977	2-1979		
7-4-1978	2-1979		
10-29-1983	6-11-1984		
6-10-1984	6-11-1984		
6-10-1990	8-9-1990		
9-12-2002	11-23-2004		



Tax parcel boundaries are established by the Genesee County Department of Real Property Tax Services. Boundaries are updated annually as of the Taxable Status Date.

Zoning District boundaries are established by the Genesee County Planning Department. All dimensional figures where shown are measured from the Highway centerline.

100-year FEMA Floodplain boundaries are for informational purposes only. Official determinations required for compliance with applicable building standards must consult the Town Floodplain Administrator (Code Enforcement Officer).

State Regulated Wetland boundaries are for informational purposes only. Official determinations required for compliance with applicable State Law must consult the NYSD Department of Environmental Conservation (DEC).

Map prepared by Genesee County Department of Planning, County Building 3, 2837 W. Main St. Rd. Batavia NY 14020 (585)44-2500 ext. 6467